

# 8CH AHD MDVR G/T Remove main board Quick Installation Guide

## Summary:

If the defective issue has already make sure that occurred on main board, please remove main board and ship back to

Company, Please following the step below :

## 1. Remove the screw on back panel



Remove the screw on bracket

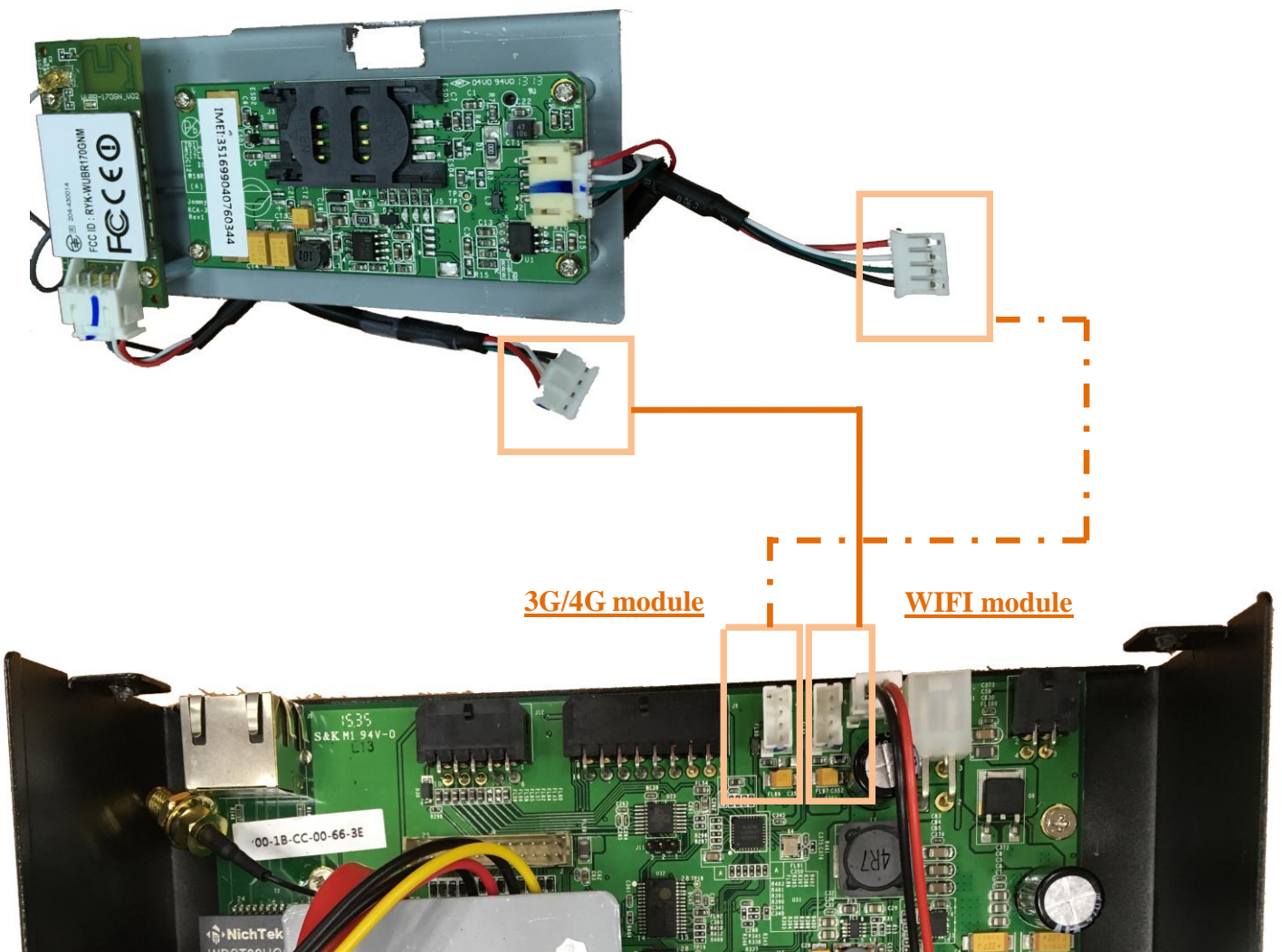


## 2. Open the top cover to remove the Network module board

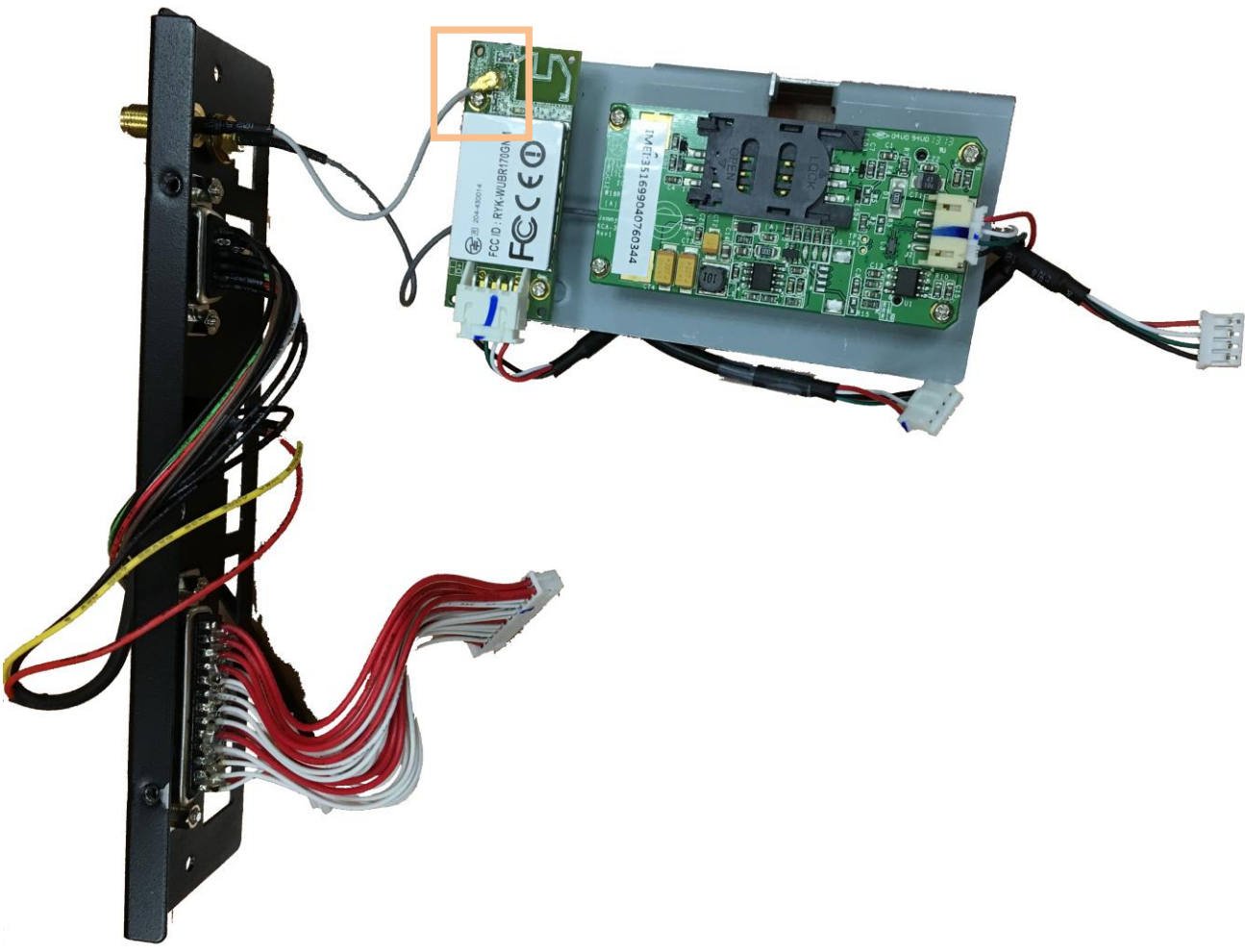
- Remove the screw on housing



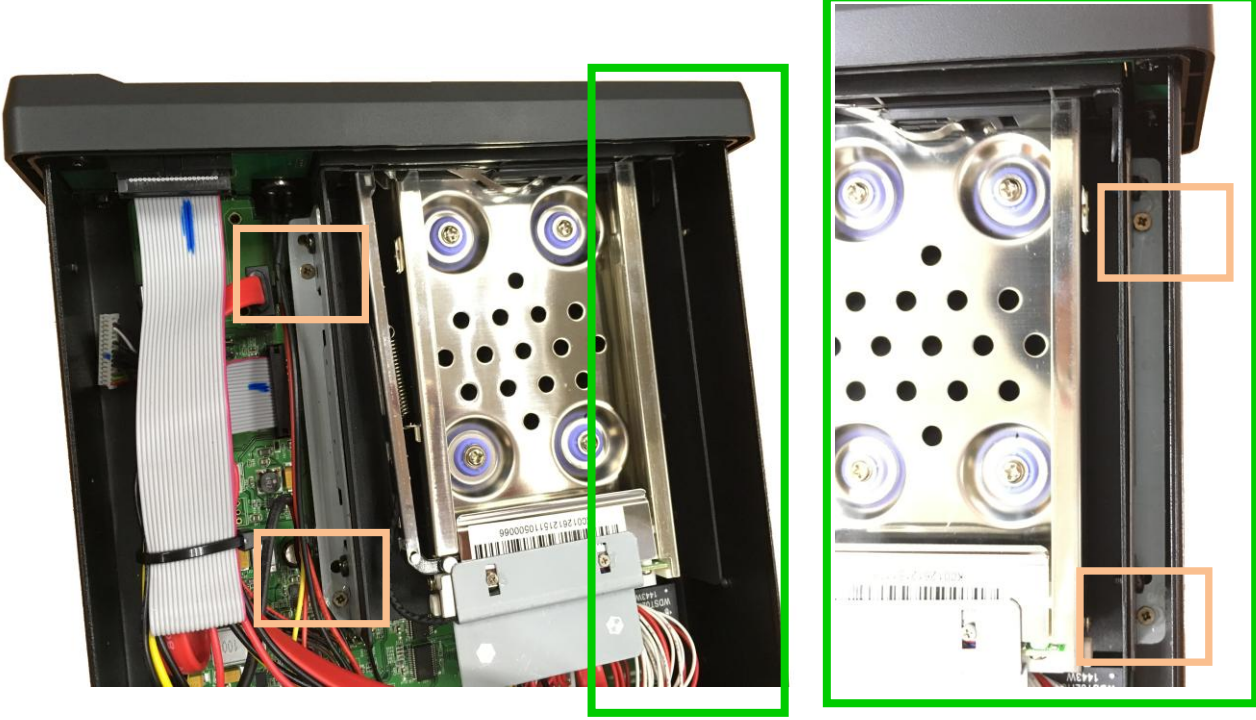
- Remove the WIFI and 3G/4G module board



- Note :  
If you do not have ability of Fluid dispensing, please do not remove the contact side.



**3. Remove the HDD trays screw**

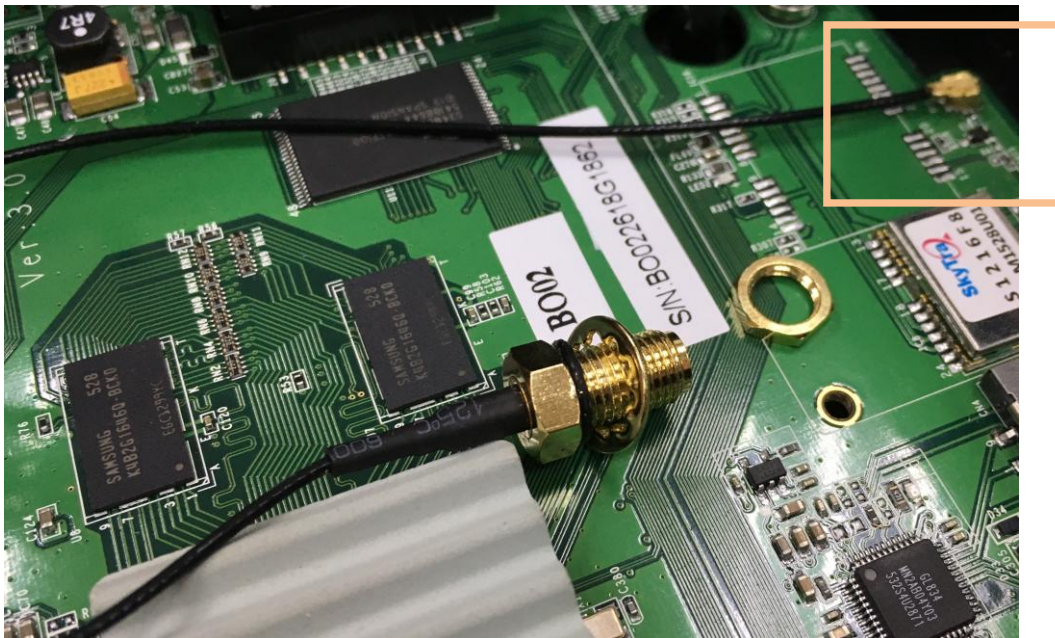


#### 4. Remove the Antenna of GPS





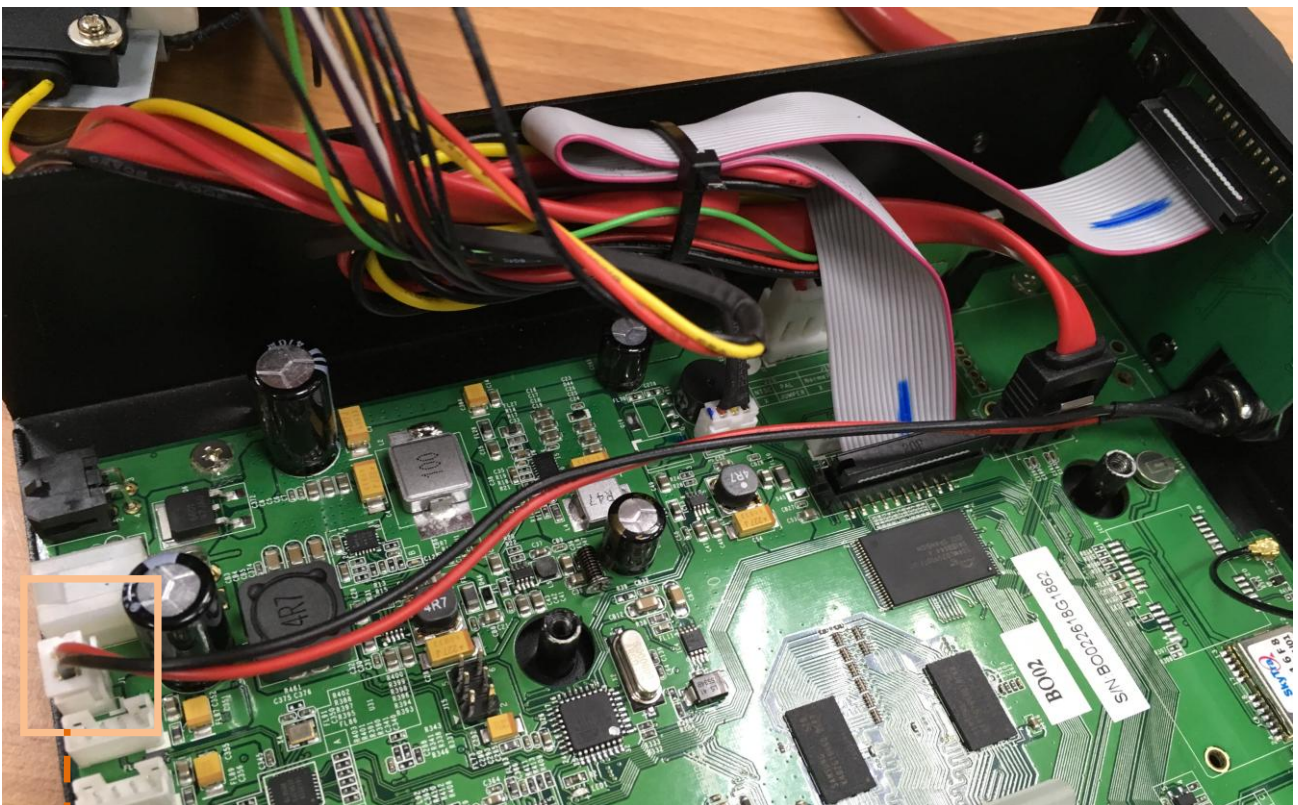
- Note :  
If you do not have ability of Fluid dispensing, please do not remove the contact side.



5. Remove the Cable with VIDEO IN / OUT.

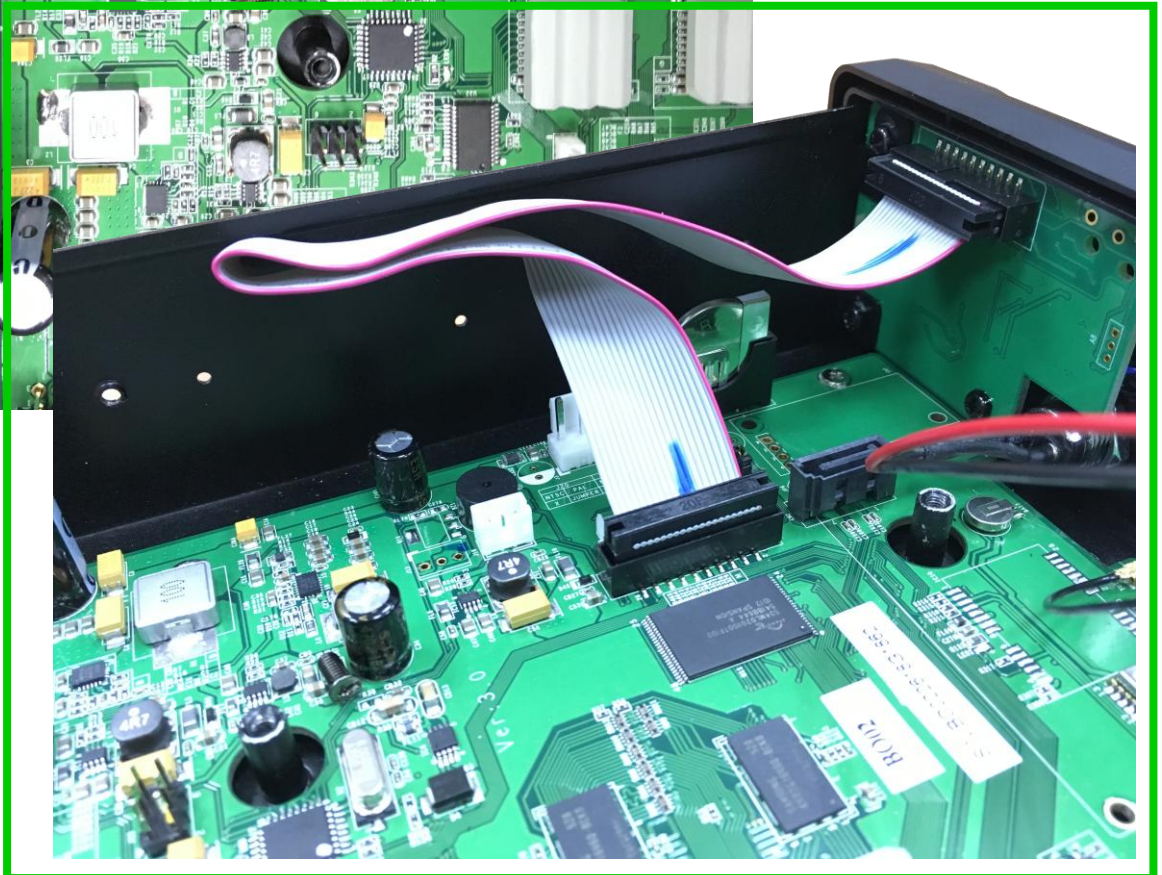
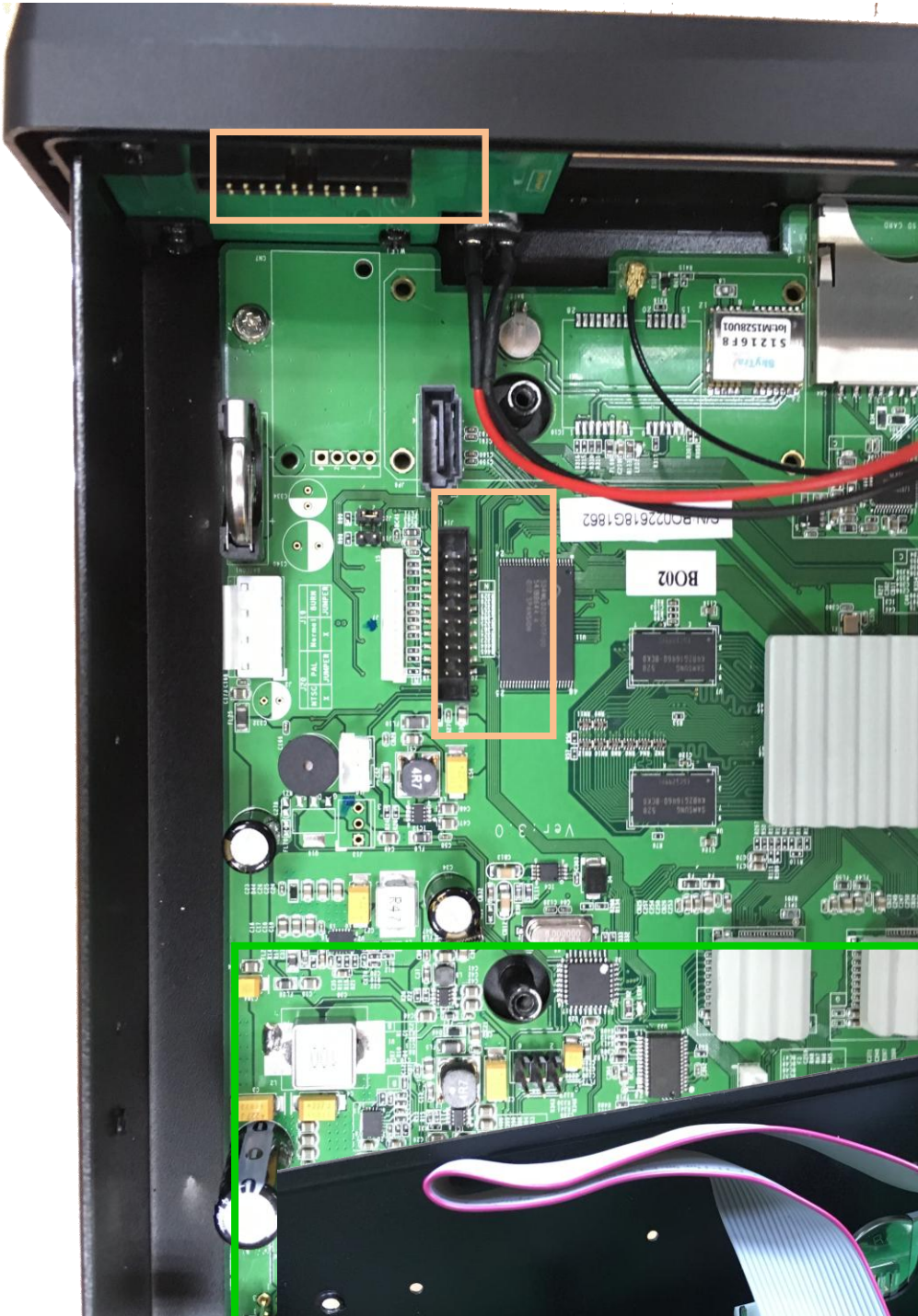


6. Remove the Locker with switch power



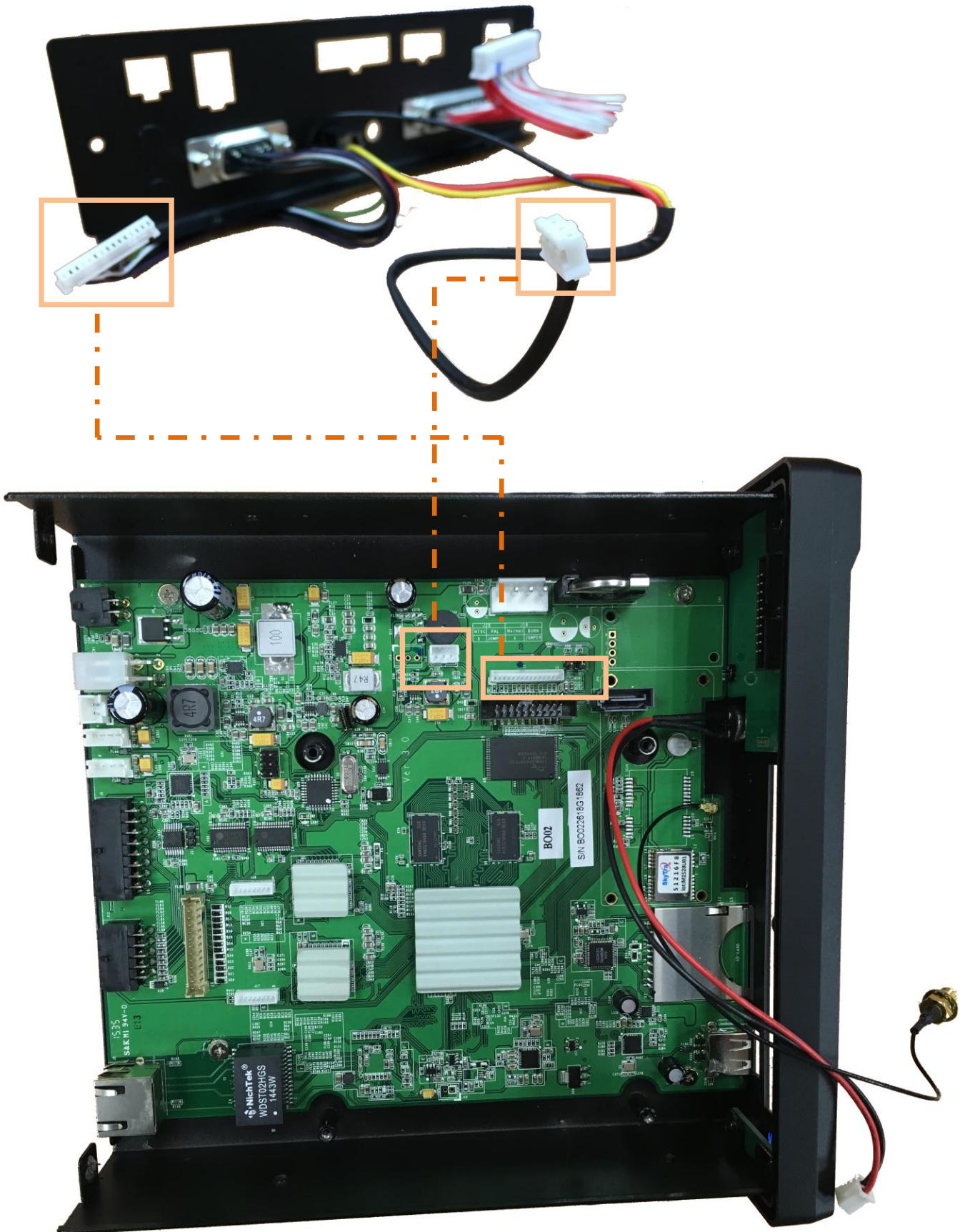
└ . . . . . Switch Power contact

7. Remove the connection Cable with front panel

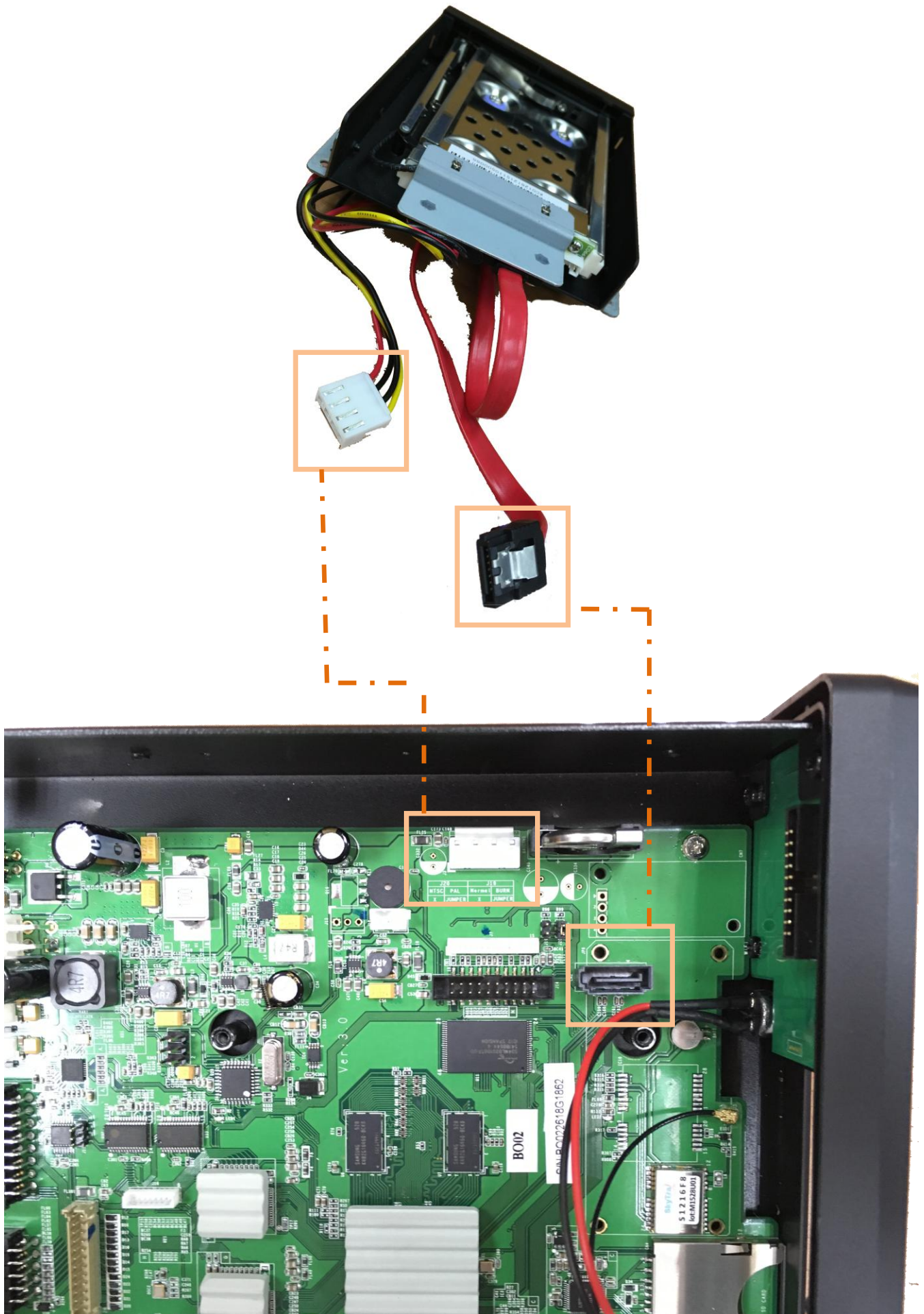




8. Remove the connection Cable with VGA and IR.



9. Remove the connection Cable with front HDD BOX



10. Remove the main PCB screw.



11. Finish

